



2023

Product Catalogue

MISSION

Developing technologies that support and sustain our communities and the environment in which we live.




Electrofusion welding wipes are a specialised moist wipe designed to clean and prepare the surfaces of PE pipe and fittings prior to welding.



Product Overview

ANT wipes are impregnated with a high specification solution containing 90% Isopropyl Alcohol to ensure surfaces are clean and free from debris and dust for a strong, durable weld.



-  For the perfect weld you need a perfect clean. Reduce the risk of a failed weld through contamination of the pipe. At 90% alcohol our wipes ensure surfaces are clean and free from dust and debris before electrofusion.
-  Manufactured to make your job easier the ANT lint free wipes leave no traces of lint on the PE surface to be welded.
-  Strong and durable, our wipes will not break down when you need them to perform. Regular wipes are 15-20GSM, our wipes are 22GSM.

Product Description	ANT Electrofusion Welding Wipes
Product Code	AIAW3015
Wipe Size	15cm x 30cm
Wipe Quantity Per Cannister	100



The unique range of **ANT Ductile Iron Backing Rings** are suitable for use on polyethylene restrained pipelines.

Product Overview

Manufactured from fusion bonded epoxy-coated ductile iron, the ANT Backing Rings provide superior rigidity, strength and sealing capability compared with more expensive stainless steel plate alternatives.

ANT Backing Rings are WSAA appraised and tested to: **AS/NZS 2280:2014, AS/NZS 4087:2011 and PIPA Code P007.**



ABR125
ANT DI Backing Ring
DN125 PN16



ABR180
ANT DI Backing Ring
DN180 PN16



Superior rigidity, sealing capability and price when compared to stainless steel.



100% Australian Made,
Registered Design
and Protected



Code	Description	Qty/Ctn
ABR125 Dn125	Backing Ring	10
ABR180 Dn180	Backing Ring	6
Standards	AS/NZS 4087:2011 AS/NZS 2280:2014 PIPA P007	



The ANT range of valve spindle extensions incorporating lengths of 150, 225 and 300mm are suitable for operation on gate valves up to and including DN300.



Product Overview

ANT's extension spindles are the only spindles on the market with WSAA appraisal (WSA PS 262).

The spindles comply with AS/NZS 2638.1:2011 and AS/NZS 2638.2:2011 Gate Valves for Waterworks Purposes.

The spindle range meets all load / force and dimensional accuracy requirements of the relevant Australian Standards. It is made in Australia using highly specialised engineered plastic composites.

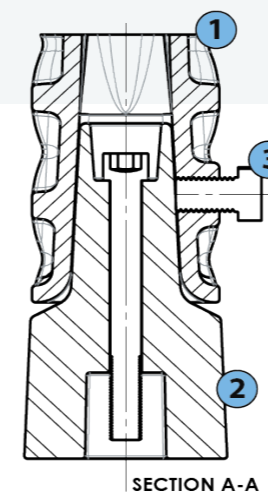
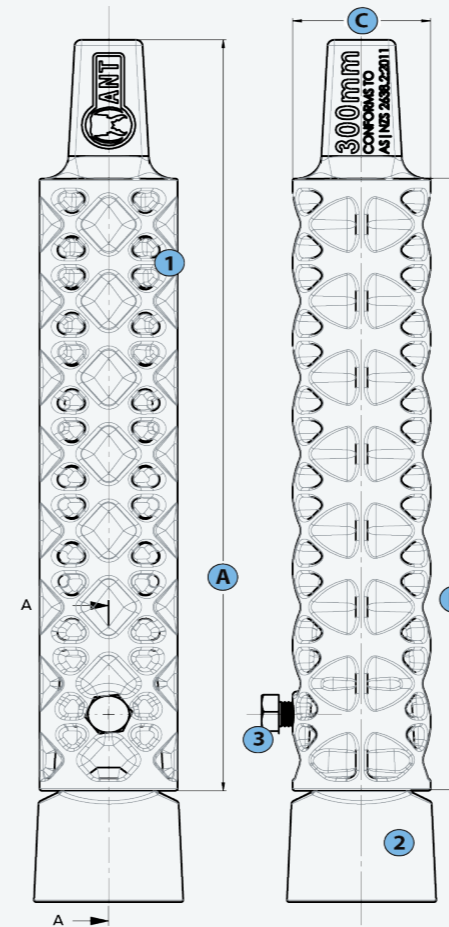
The spindle range has been thoroughly tested using cutting edge engineering and Finite Element Analysis (FEA) and physical testing. Each spindle extension is fitted with a M12 Grade 316 stainless steel bolt to allow retention on to the spindle cap.



AES300
Ant Valve Extension Spindle 300mm

AES225
Ant Valve Extension Spindle 225mm

AES150
Ant Valve Extension Spindle 150mm



Spindle	300	225	150
Code	AES150	AES225	AES150
A Length (mm)	368	293	218
C Diameter (mm)	60	60	60
B Effective (mm)	300	225	150
Weight (g)	845	650	451
Valve Size	DN80 - DN300		
Standards	AS/NZS 2638.1:2011 AS/NZS 2638.2:2011 WSA PS 262		
Manufacturing Process	Injection Moulding		
Material	Composite Glass Filled Thermoplastic		
Structure	Single Piece Homogeneous		
Maximum Operating Temperature	100°C		
Colour	Solid Black		
Maximum Operating Torque	1125Nm		

- 1 Extension Spindle
- 2 Valve Cap
- 3 M12X20 SS316 Bolt



Scan QR Code to
view online.

1300 048 635

VISIT ANTINFRASTRUCTURE.COM